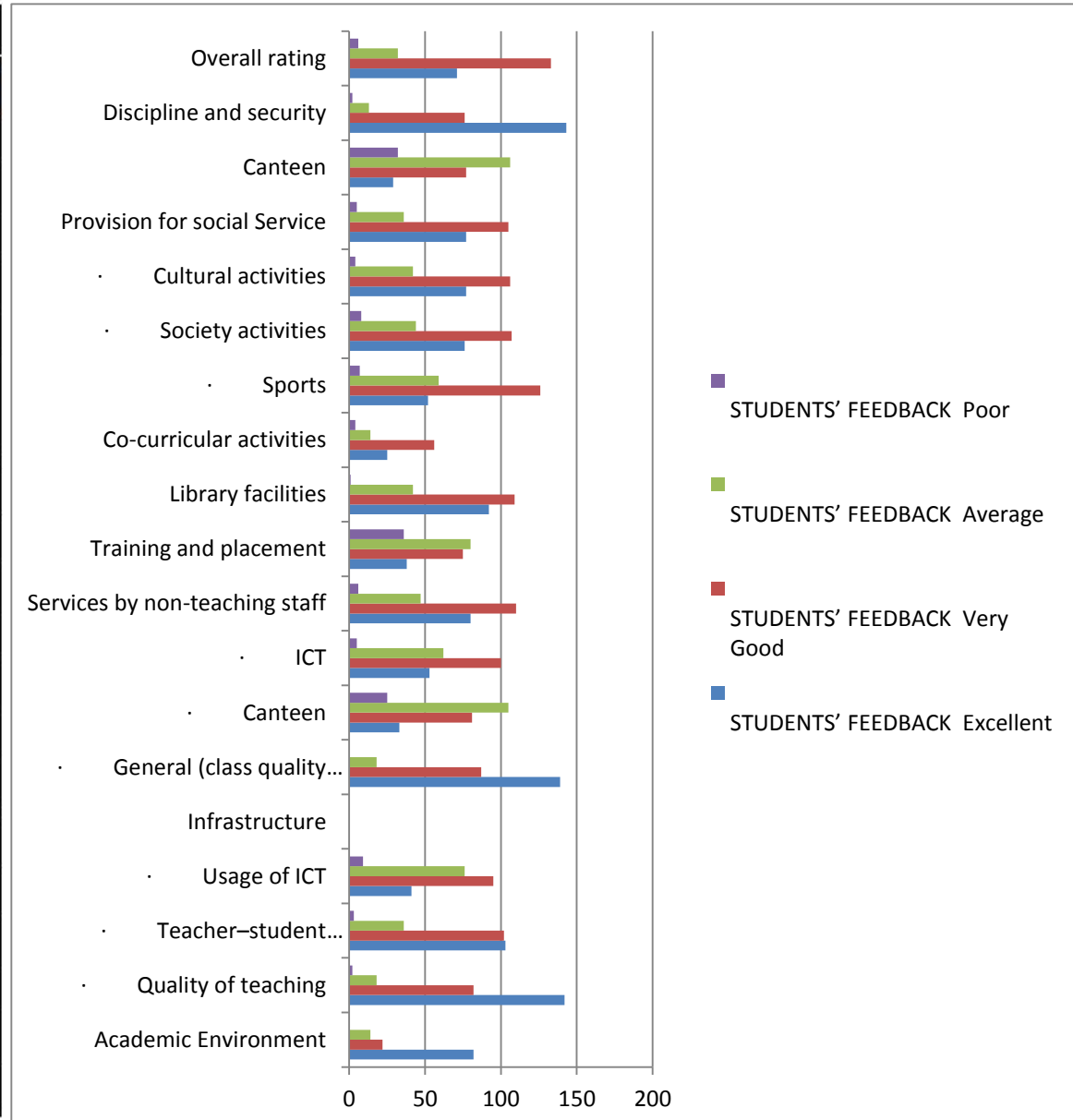


DETAILS OF FEEDBACK TAKEN (2017-18 to 2021-22)

STUDENTS' FEEDBACK : SESSION 2017-18

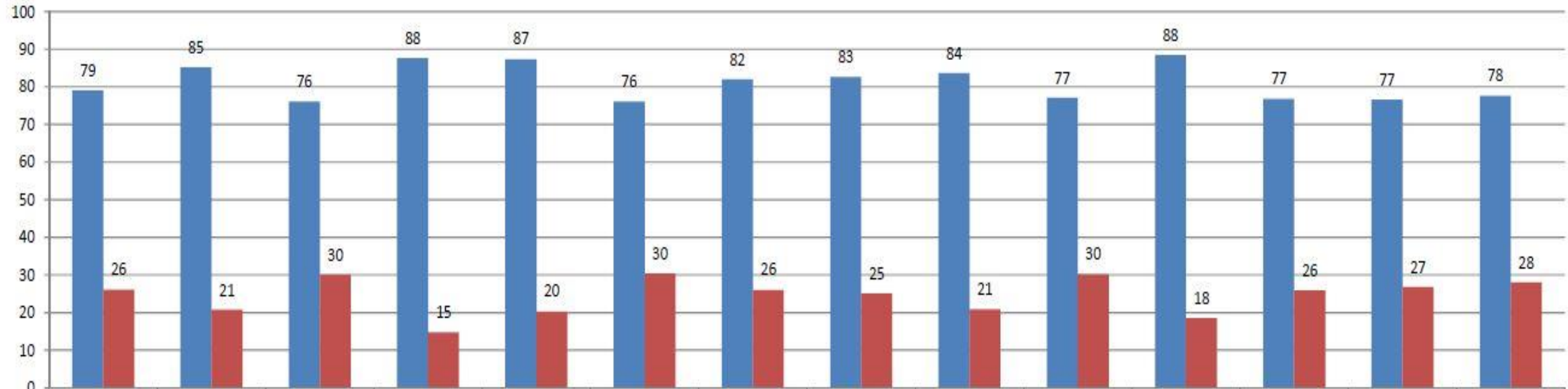
<i>Total = 244</i>				
STUDENTS' FEEDBACK : SESSION 2017-18				
Attributes	Excellent	Very Good	Average	Poor
Academic Environment	82	22	14	0
· Quality of teaching	142	82	18	2
· Teacher-student interface	103	102	36	3
· Usage of ICT	41	95	76	9
Infrastructure				
· General (class quality of curriculum room, labs, etc.)	139	87	18	0
· Canteen	33	81	105	25
· ICT	53	100	62	5
Services by non-teaching staff	80	110	47	6
Training and placement	38	75	80	36
Library facilities	92	109	42	1
Co-curricular activities	25	56	14	4
· Sports	52	126	59	7
· Society activities	76	107	44	8
· Cultural activities	77	106	42	4
Provision for social Service	77	105	36	5
Canteen	29	77	106	32
Discipline and security	143	76	13	2
Overall rating	71	133	32	6



STUDENTS' SATISFACTION SURVEY : SESSION 2020-21

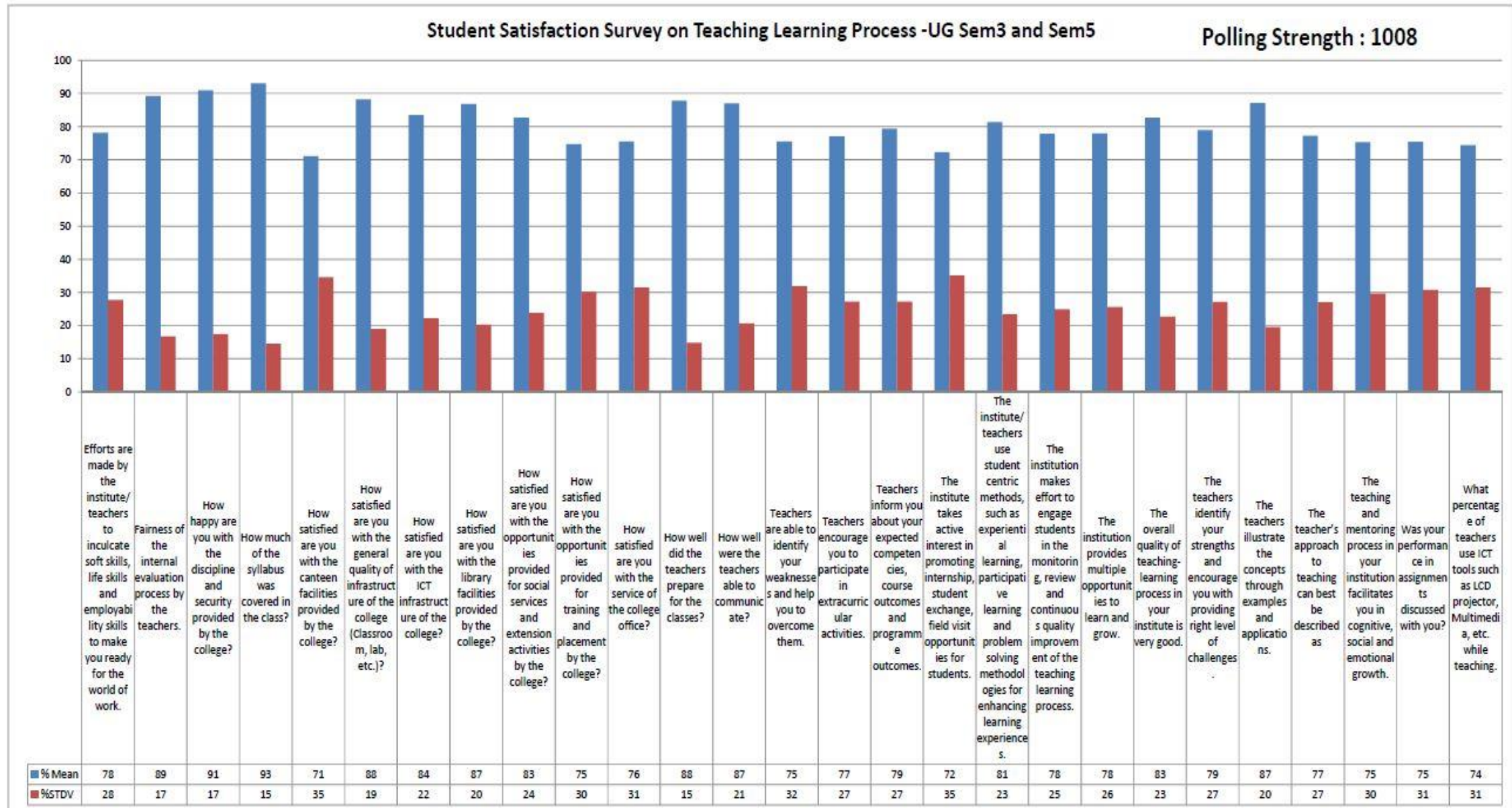
Student Satisfaction Survey on Teaching Learning Process - UG Sem-1

Polling Strength : 743



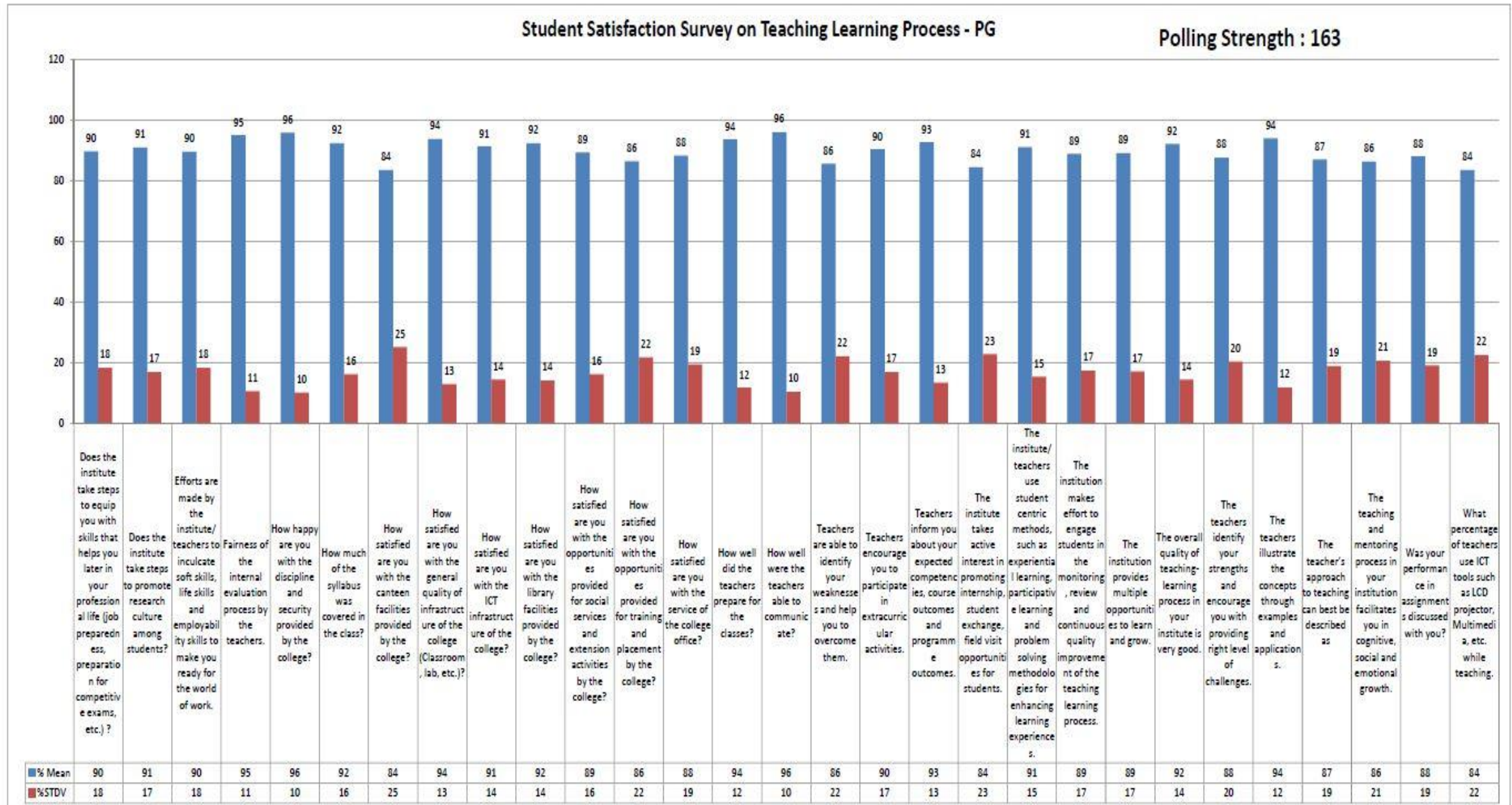
	How much of the syllabus was covered in the class?	How satisfied are you with the ICT infrastructure of the college?	How satisfied are you with the service of the college office?	How well did the teachers prepare for the classes?	How well were the teachers able to communicate?	Teachers are able to identify your weaknesses and help you to overcome them.	Teachers inform you about your expected competencies, course outcomes and programme outcomes.	The institute/ teachers use student centric methods, such as experiential learning, participative learning and problem solving methodologies for enhancing learning experiences.	The overall quality of teaching-learning process in your institute is very good.	The teachers identify your strengths and encourage you with providing right level of challenges.	The teachers illustrate the concepts through examples and applications.	The teacher's approach to teaching can best be described as	The teaching and mentoring process in your institution facilitates you in cognitive, social and emotional growth.	What percentage of teachers use ICT tools such as LCD projector, Multimedia, etc. while teaching?
■ % Mean	79	85	76	88	87	76	82	83	84	77	88	77	77	78
■ %STDV	26	21	30	15	20	30	26	25	21	30	18	26	27	28

STUDENTS' SATISFACTION SURVEY : SESSION 2020-21

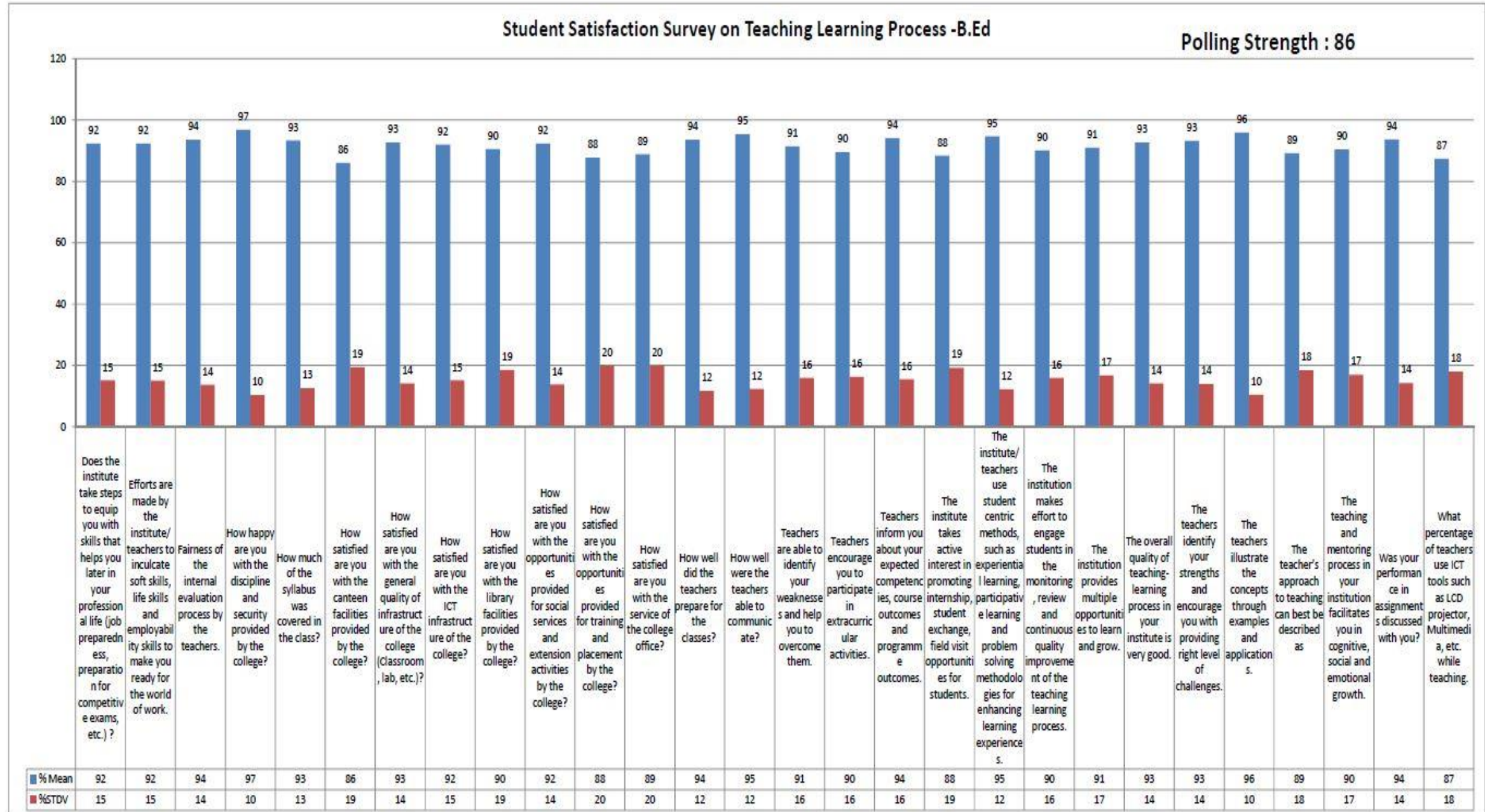


Suggestion(s) : As a student of B.A. Journalism and Mass Communication (hons.) I would prefer the college to be more practical in their teaching approach rather than just sitting in the classroom and only learning the theory part. More practical classes and field work will be highly appreciated.,

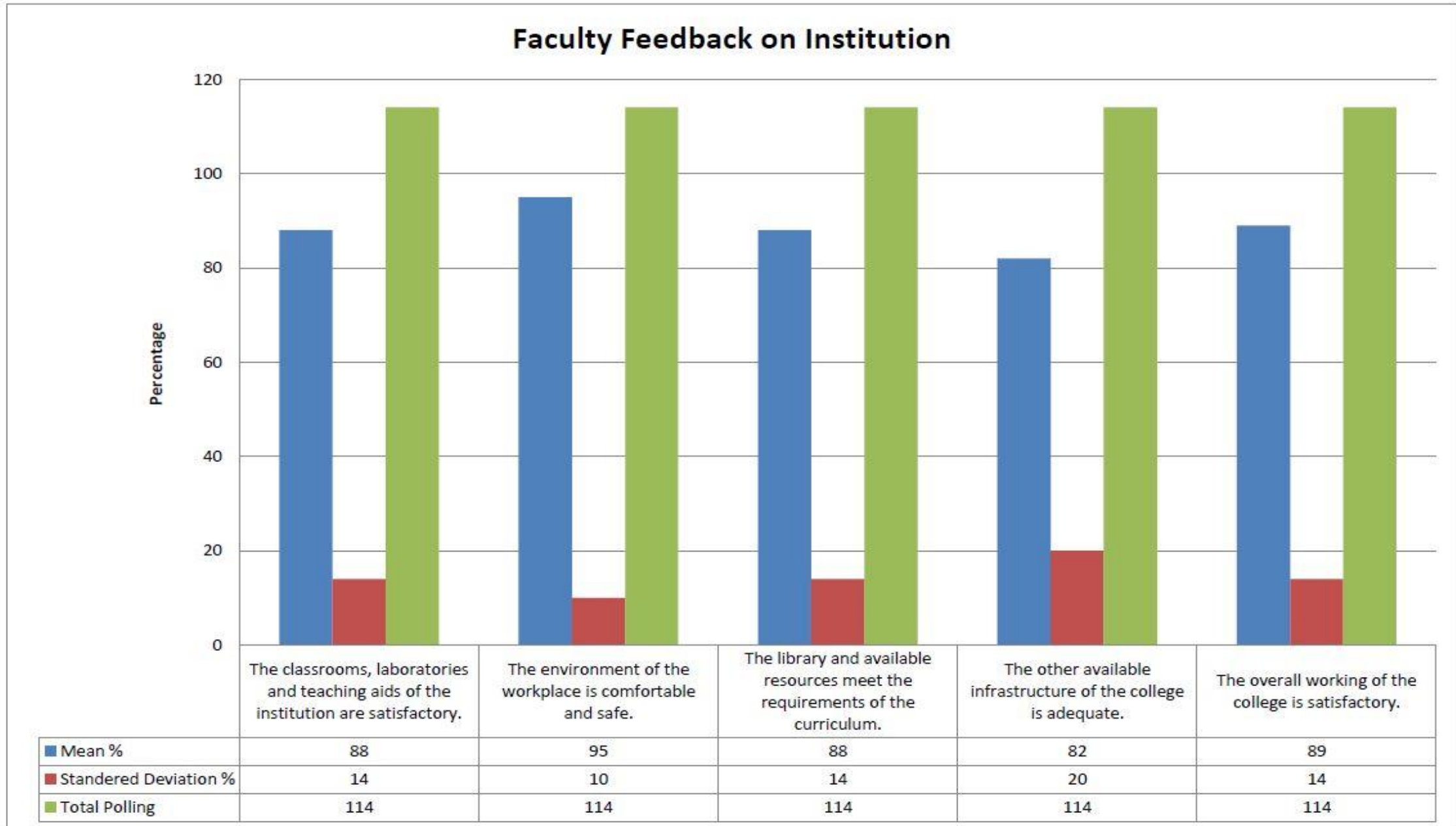
STUDENTS' SATISFACTION SURVEY : SESSION 2020-21



STUDENTS' SATISFACTION SURVEY : SESSION 2020-21

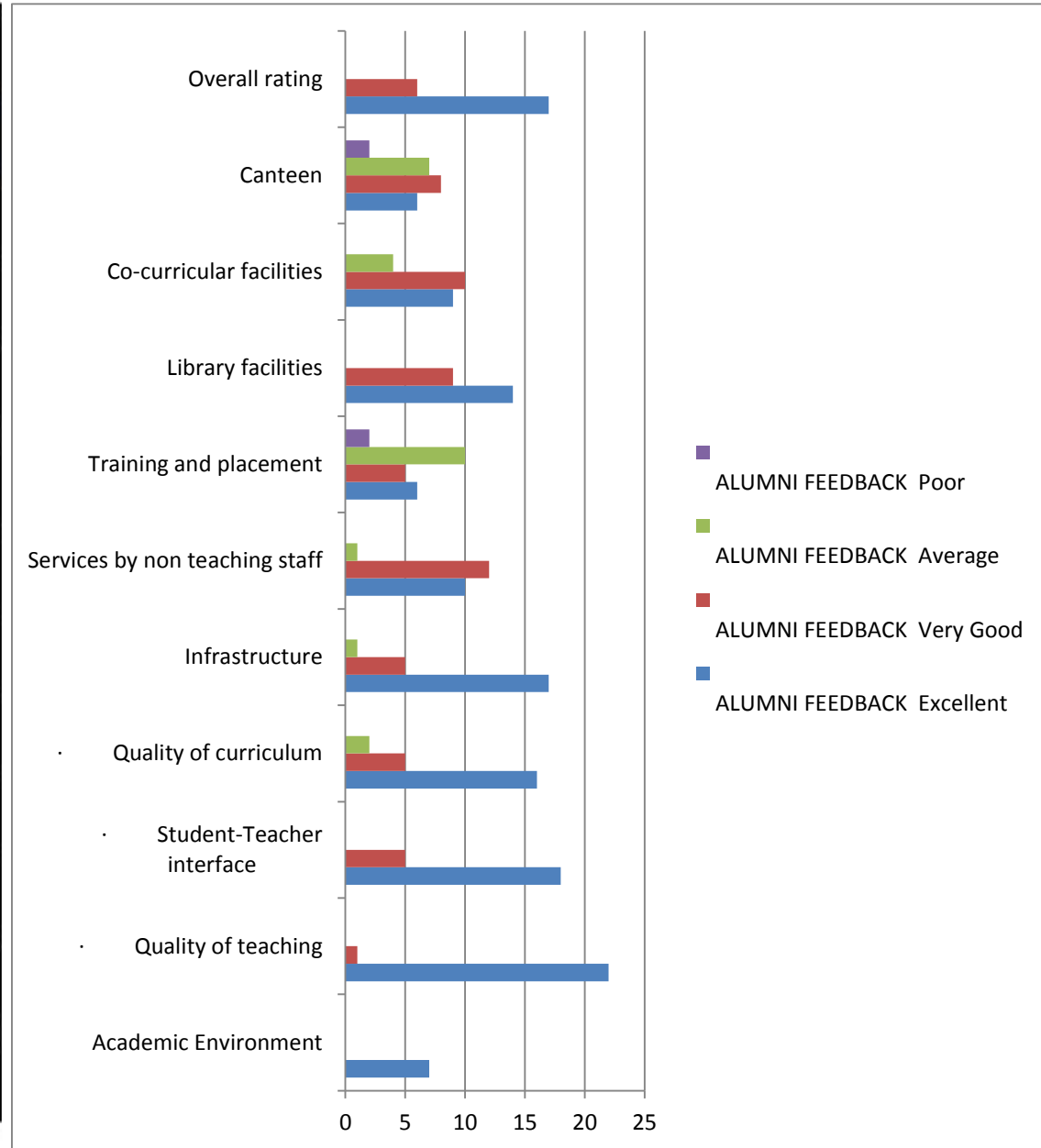


FACULTY FEEDBACK ON INSTITUTION : SESSION 2021-22



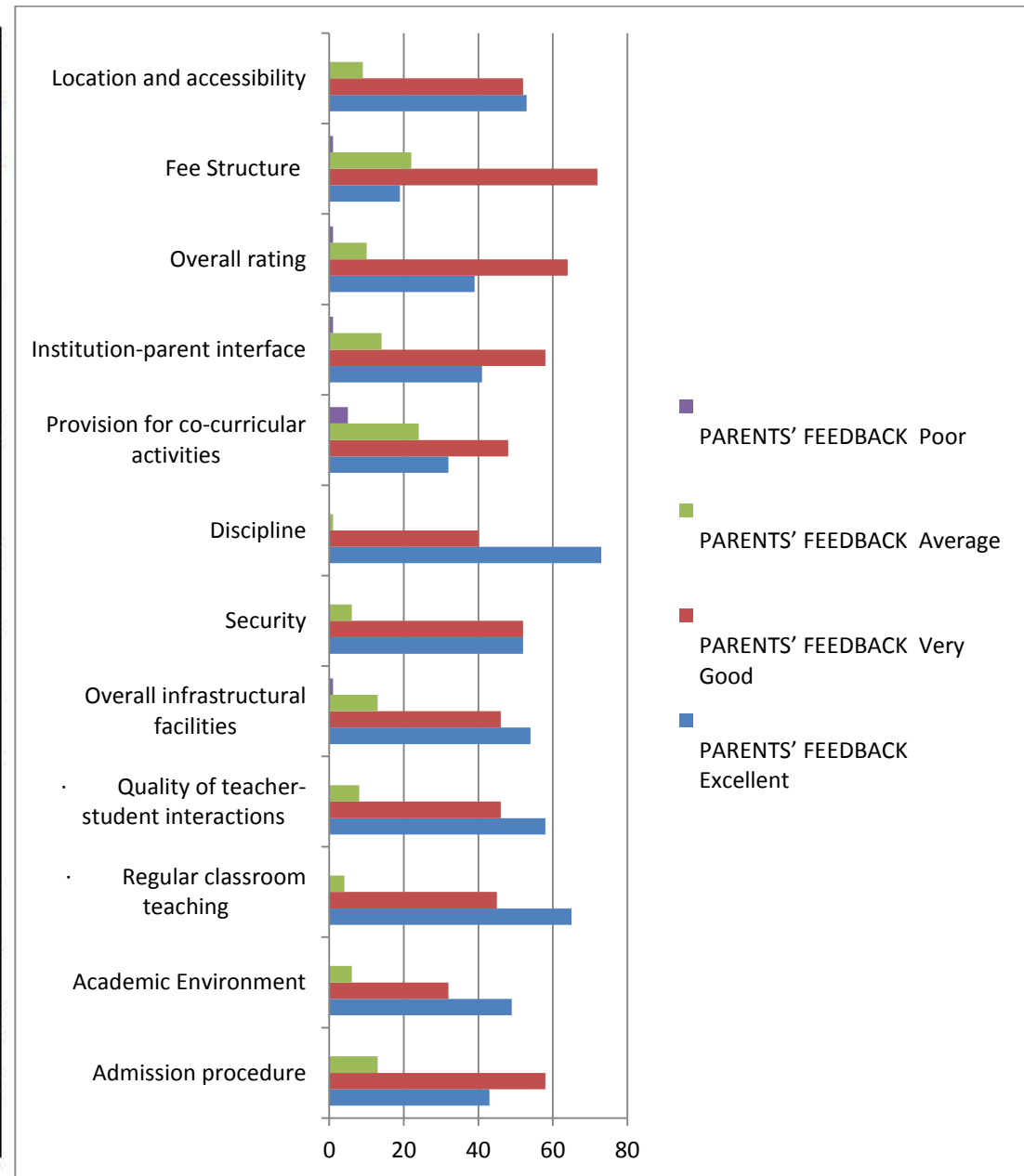
ALUMNI FEEDBACK : SESSION 2017-18

<i>Total = 23</i>				
ALUMNI FEEDBACK : SESSION 2017-18				
Attributes	Excellent	Very Good	Average	Poor
Academic Environment	7	0	0	0
Quality of teaching	22	1	0	0
Student-Teacher interface	18	5	0	0
Quality of curriculum	16	5	2	0
Infrastructure	17	5	1	0
Services by non teaching staff	10	12	1	0
Training and placement	6	5	10	2
Library facilities	14	9	0	0
Co-curricular facilities	9	10	4	0
Canteen	6	8	7	2
Overall rating	17	6	0	0



PARENTS' FEEDBACK : SESSION 2017-18

Total = 114				
PARENTS' FEEDBACK : SESSION 2017-18				
Attributes	Excellent	Very Good	Average	Poor
Admission procedure	43	58	13	0
Academic Environment	49	32	6	0
Regular classroom teaching	65	45	4	0
Quality of teacher-student interactions	58	46	8	0
Overall infrastructural facilities	54	46	13	1
Security	52	52	6	0
Discipline	73	40	1	0
Provision for co-curricular activities	32	48	24	5
Institution-parent interface	41	58	14	1
Overall rating	39	64	10	1
Fee Structure	19	72	22	1
Location and accessibility	53	52	9	0



PARENTS' FEEDBACK FOR UG, PG & B.ED. : SESSION 2020-21

Parents' Feedback for UG, PG & B.Ed. 2020-21			
Parameter	Mean %	Standard Deviation %	Total Number of Polling
Academic Environment	79	24	828
Admission Procedure	75	27	828
Discipline	82	22	828
Fee structure	53	42	828
Institution-parent Interface	63	35	828
Institutional response to current Pandemic situation	65	39	828
Location and accessibility	79	24	828
Overall infrastructural facilities	74	27	828
Provision for co-curricular activities	71	30	828
Quality of Offline mode of teaching	75	27	828
Quality of Online mode of teaching	72	31	828
Quality of teacher-student interaction	72	32	828
Security in the campus	79	24	828
Overall rating	74	25	828

